



50 Bartholomew Close, St Paul's, EC1A

£2,800 Per Month

A luxurious one double bedroom apartment situated on the ground floor, less than 5 minutes away from St Paul's, Barbican & Farringdon stations and lots of amenities in City of London.

The property comprises a bright reception and dining space with view of St Bartholomew the Great, modern open plan kitchen with integrated appliances, a spacious bedroom with built-in wardrobe, extra ample storage space, a large marble tiled bathroom and access to residential garden.

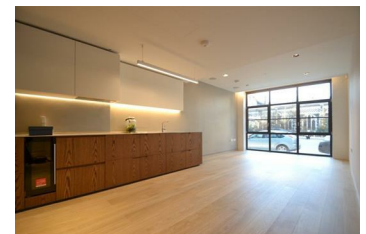
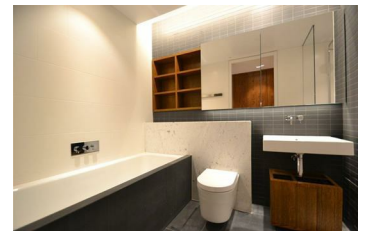
*****Residents have access to a private bar, cinema, kitchen and dining room all located within the building.*****

The property benefits from luxurious and stylish decor, sound system, great views from the reception and bedroom, 24 hours concierge service and great location for professionals in City of London.

A stones throw away from restaurants, bars, cafes, delis and boutique shops of St Paul's, Barbican and Farringdon.

The property is located within a 5 minutes walk from St Paul's tube station (Central line) and Barbican & Farringdon tube stations (Metropolitan, Circle and Hammersmith & City lines).

- State of the art architecture with lighting and temperature adjustable via iPad
- Double size bedroom
- Private Bar
- Close to St Paul's, Barbican & Farringdon tube stations
- Spacious reception with dining space
- State of the art bathroom equipped with bath and walk-in shower
- Private Cinema
- Modern open plan kitchen with integrated appliances
- Residential Dining room & kitchen for special events
- 24 hours concierge



Energy Efficiency Rating		Environmental Impact (CO ₂) Rating	
Current	Target	Current	Target
100 kWh/m ² /year	100 kWh/m ² /year	100 g/m ² /year	100 g/m ² /year
A	A	A	A
B	B	B	B
C	C	C	C
D	D	D	D
E	E	E	E
F	F	F	F
G	G	G	G

England & Wales 2008/1/EC